

MangoGT

OVERVIEW

The MangoGT is a compact & powerful ARM based Linux server with the full Mango Enterprise application pre-installed. There are no additional licenses or software needed to operate. For applications with less than 1000 data points the MangoGT replaces expensive and power hungry servers with a ready to use appliance.

HARDWARE

Processor	ARM Quad Core 1.2GHz
RAM	1 Gigabyte
Operating System	Linux Debian with root access
Disk Type	High Speed EMMC Flash
Disk Size / Historical Samples	16 GB = up to 600 million
Power Input	12-24 AC/DC
Power Usage	2-5 Watts
Mount	Built-in Din-rail Clip
Dimensions	H 2" X W 4" X D 5"
IO	- (2) USB 2.0 - (2) Built In RS-485 port with RX TX Lights - Full size HDMI

PROTOCOLS

- Modbus IP
- Modbus Serial
- BACnet IP
- BACnet MS/TP
- MQTT
- HTTP
- SNMP
- SQL
- ASCII File
- Serial
- MBus
- DNP3
- POP3
- Data Files (XML, CSV, XLS, BIN)
- Temperature Sensors
- Allen Bradley (extra fee)
- Mango Cloud Sync
- Haystack

REMOTE SITE MONITORING & IIoT

The MangoGT combined with a Mango Automation cloud server offers a great option for remote system monitoring or control. Each MangoGT seamlessly syncs its real time and historical data to the central server while the central Mango monitors each remote MangoGT to ensure top performance. This allows a variety of topologies to be used.



 1 Year Warranty



Building Automation



Industrial Internet of Things



Data Center Automation



SCADA



FEATURES



Built In Protocols

With BACnet, Modbus, MQTT, SNMP, DNP3, SQL, CSV Files, HTTP, and others there is no need to pay for extra drivers or software tools.



High Performance Time Series Historian

Mango is capable of storing billions of historical values with ground breaking throughput while utilizing surprisingly small amounts of disk space.



Built In Analytics

Mango provides several standard web interfaces for users to perform quick and efficient analytics of systems.



Report and Billing

Create fully customized reports & bills using Excel documents. Users can manually run reports anytime, or reports can be scheduled and automatically delivered to users' email inboxes.



Automation & Alarming

Mango includes several powerful scripting environments that allow users to write control algorithms or simple calculations. Users can configure multiple types of alarms to trigger event handling or notifications.



System Scalability

From a simple standalone application to a global data acquisition system with thousands of remote nodes, the same Mango software scales for all types needs.



Advanced Schedules With Exception Calendar

Flexible scheduler for Mango that allows weekly schedules to raise events and return them to normal. Exception rules are layered on a schedule to override lower layers and the default schedule. Layers can be times within date ranges or specific days.



Leading Edge Data Visualization

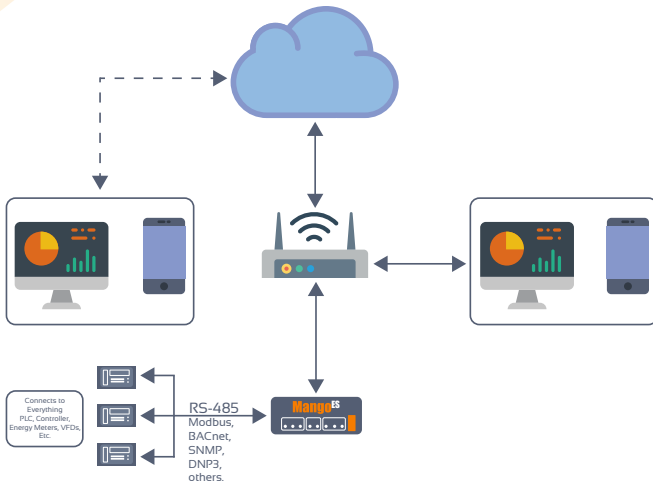
Utilizing leading open source web development technologies, Mango provides a flexible development platform for mobile-friendly dynamic dashboards, web/mobile apps and kiosks.



Powerful IIoT & Remote Site Monitoring

With automatic data replication, self healing history synchronizations and real time updates you can configure your global data acquisition / IIoT system to suit any need.

VARIETY OF TOPOLOGIES

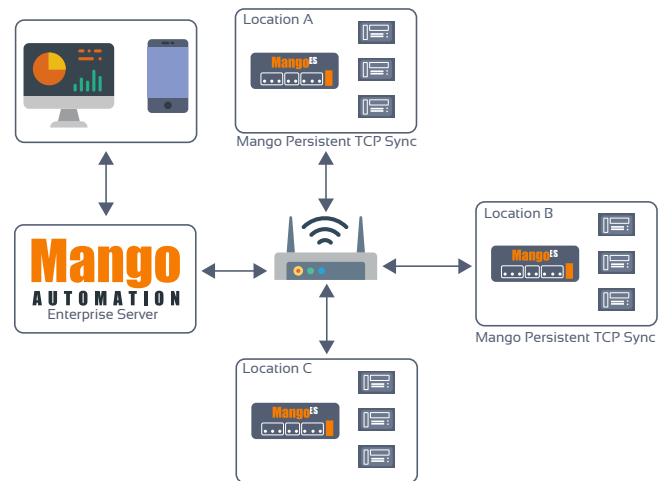


STAND ALONE DATA LOGGING & CONTROL

MangoGT is installed locally to gather data across the IP or serial networks available, providing users fast local access to their real time and historical trends for analysis, alarming and control.

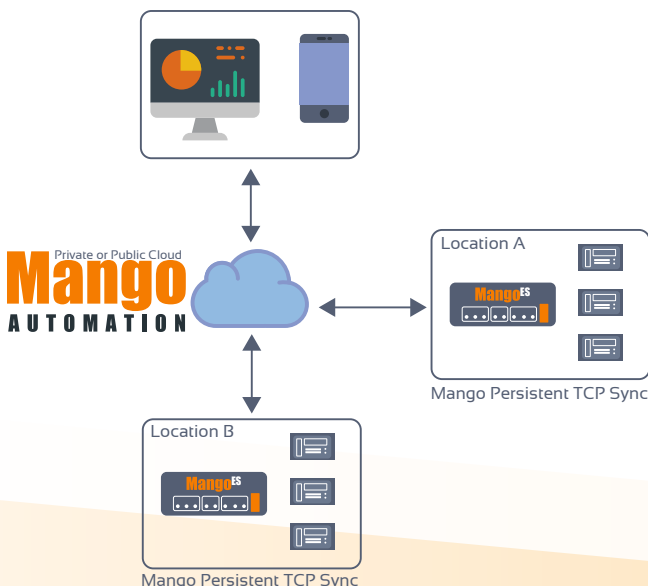
LOCATION WIDE DISTRIBUTED INSTALLATION

A central Mango Enterprise server collects data on its local area networks while multiple MangoGT units collect and forward data into the central Mango server. This provides a easy, unified system where hard to access equipment can bridge local networks and exceed limitations on serial network lengths.

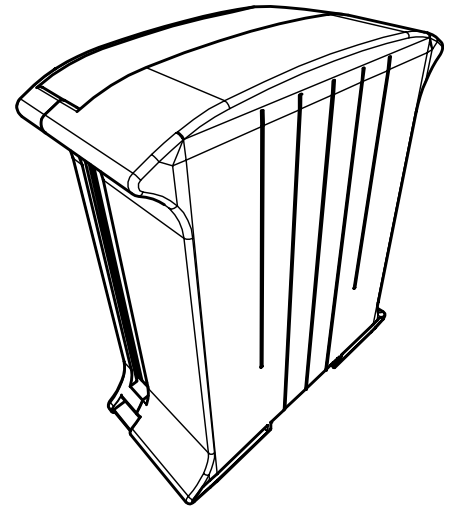
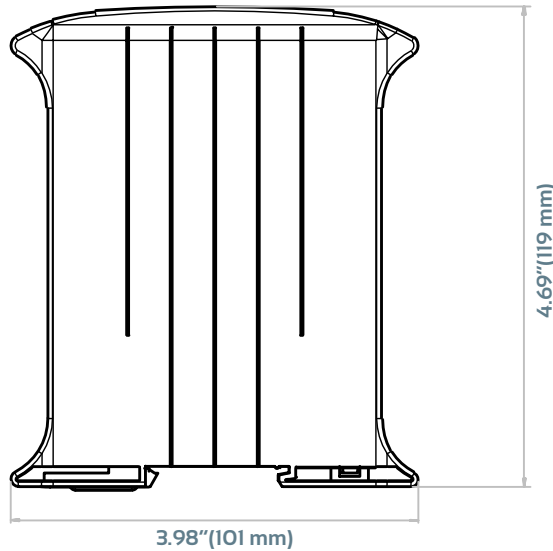
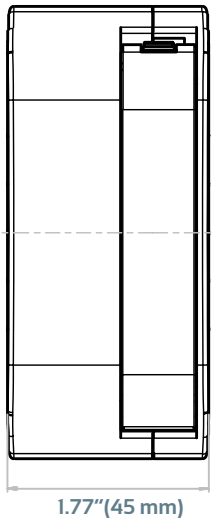


WIDE AREA NETWORK INSTALLATION

Mango Enterprise is installed in a cloud server. MangoGT's or other locally installed Mango Enterprise instances collect local data and forward to the central cloud server, giving visibility to systems and locations around the globe.



MOUNTING & DIMENSIONS



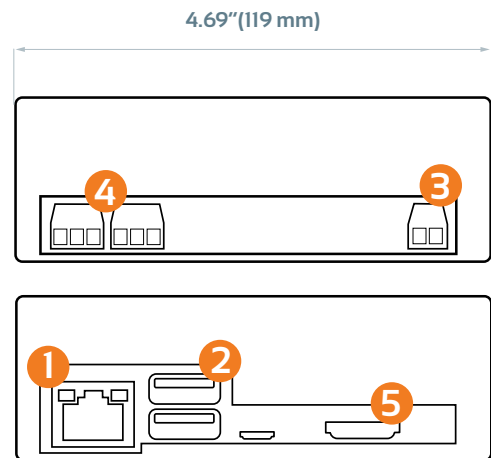
ENVIRONMENTAL SPECIFICATIONS

Operating Temperature	0 ~ 70C. Indoor Environment
Packaged Weight	11oz

ORDERING INFORMATION

MangoGT-v4-[options]

Options	NA = Nothing NLB = No Labels
----------------	---------------------------------



- 1** Gigabit Ethernet
- 2** 2 x USB 2.0 Host
- 3** 12-24 Volts AC/DC Power Input
- 4** (2) RS-485 Connector
- 5** HDMI Connector - for terminal access and optional HMI display